

DELTA

San Francisco - Peninsula

FOUNDATION

Corporate Sponsors

Silver (\$2,500 - \$4,999)

Wells Fargo Foundation

Bronze (\$1,000 - 2,499)

Union Bank, Genentech

Individual

Gold (\$5,000 and above)

Evelyn Neely, Bessie Stewart-Ross,
Janice Willis

Silver (\$2,500 - \$4,999)

Helen Kennedy-Lazar

Bronze (\$1,000 - \$2,499)

Barbara Brown, Bettye Price, Lillie
Culclager, Imo Udom, Farralon Udom,
Quita Highsmith, Regina Wallace-Jones

Patrons

Abayomi Jones, Alice Walker, Allean Ritcher,
Bridget Morgan, Chantelle Aris-Okarter,
Christopher Amos, Cole Cannon, Damara
Aldridge, Danielle Moore Burton, Darlene
Martin, Debra McCoy, Dominique Hollins,
Doris Rutland, Earlene Douglas, Edwina
Foster, Elisabeth Bond, Eva Beeler, Faith
McCoy Scriven, Geraldine Woolfolk, Harold
Byers, Helena Jackson, Jeannie Hagler,
Jacquelyne Richardson, Jarrelle Evans,
Jean- Paul Christophe, Julie Crawford,
Kela's Collection, Kim Lewis- Davis, Kristine
Parker, Kimberlee Smith, Leona Bridges,
Leslie Friedman, Linda Rarden, Loretta
Cohen, Lucretia-del Broussard, Lucy Crain,
MD, Lynetta Haynes-Oliver, Lillian Yvette
Irvin, Mae Threadgill, Martin Harband,
Mildred Swann, Patricia McCambridge,
Robert Cheathman, Robin Young,
Samantha Mooror, Tanisha Miles, Teri
Jackson, SFP Alumnae Chapter



Bessie Stewart-Ross, Chair Delta SF-Peninsula Foundation Chair

Message from the Chair

Dear Supporters, Family, and Friends,

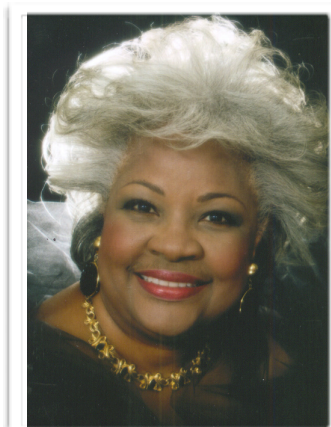
Thank you for supporting the Delta San Francisco-Peninsula Foundation during its most successful 2016 year. In addition to the annual Financial Fortitude Workshop, our five wonderful scholars are each receiving \$12,000 scholarships from the Foundation over a period of four-years. We truly appreciate your generous giving and support.

The theme for our annual Financial Fortitude Workshop was "Building a Roadmap to Financial Success." Judge Teri L. Jackson moderated the panel for adults on the following financial topics: Building Blocks to Retirement, Suddenly Single and Making it Work, and Budgeting: Dollar Decisions. Yancie M. Davis, an admission's counselor from Stanford, guided the youth through the process of creating a stellar college application packet. Other topics included information about FAFSA and where to apply for scholarships.

The Foundation welcomed to the Board, Elisabeth Bond, Esq., Judge Teri Jackson, and Imo Udom, CEO of Wepow. We look

The Evelyn Neely Diamond Scholarship

Ms. Neely is a native Texan. She graduated from Phyllis Wheatley



High School in Houston, Texas with Barbara Jordan. She received her Bachelor of Arts degree from Wiley College and earned her Master's of Science degree from the University of Texas. Ms. Neely is a charter member of the San Francisco-Peninsula Alumnae Chapter of Delta Sigma Theta Sorority, Inc. Within that chapter, she has served as president, secretary and treasurer. She has also held offices at the regional and national level.

In 1995, Ms. Neely was one of ten women chosen for the San Mateo County Women's Hall of Fame - an award that recognizes outstanding women for their achievements and contributions to the overall well-being of San Mateo and its citizens. Ms. Neely is also a founding member of the Saint James Community Foundation which was founded in 1913. She is a loving mother, and grandmother, who is grounded in family values, serious about social issues and committed to serving her community.

forward to their expertise in helping our organization become more socially responsible in the community through our programs.

From your generosity, our gross income was \$62,787.13 and the net income was \$46,566.92 for 2016. It was a very exciting year, and we are truly grateful to each of you for your support.

Your gifts and talents are always appreciated, and we look forward to your continued support.

Sincerely,

Bessie L. Stewart-Ross
Chair, Delta San Francisco-Peninsula Foundation

Our 2016 Board of Directors

Executive Board

Bessie L. Stewart-Ross, Chair
Bettye Price, Vice Chair
Quita Highsmith, Secretary
Farralon Udom, Treasurer

Members

Barbara Brown
Elisabeth Bond, Esq.
Helen Kennedy-Lazar
Imo Udom
Lillian Yvette Irvin
Mildred Swann
Regina Wallace Jones
Hon. Teri Jackson

BALANCE SHEET

Year Ending December 31, 2016

ASSETS

<i>Checking Accounts</i>			
	Bank of America (1045)	\$	11,002.22
	Bank of America (5664)	\$	35,106.03
	Chase (7601)	\$	0.01
<i>Money Market Accounts</i>			
	Union Bank (1088)	\$	3,902.25
	Union Bank (5251)	\$	29,294.30
<i>Other Accounts</i>			
	PayPal	\$	2,086.83
Total Cash and Cash Equivalents			\$ 81,391.64
<i>Investments</i>			
	Corporate Bonds	\$	81,526.96
	Mutual Funds	\$	178,387.60
	Exchange Traded Funds	\$	46,349.98
Total Investments			\$ 306,264.54
TOTAL ASSETS			\$ 387,656.18
LIABILITIES			
	No Liabilities	\$	-
TOTAL LIABILITIES			\$ -
NET WORTH			
	Balance as of January 1, 2016	\$	341,089.26
	Current Year Earning	\$	46,566.92
	Balance as of December 31, 2016		\$ 387,656.18
TOTAL LIABILITIES AND NET WORTH			\$ 387,656.18

INCOME STATEMENT

Year Ending December 31, 2016

INCOME

<i>Donations</i>			
	Member and Chapter Donations	\$	31,635.00
	Community Donations	\$	6,536.64
			\$ 38,171.64
<i>Investment Income</i>			
	Investment Income	\$	9,785.43
	Realized Gains (Losses)	\$	58.79
	Unrealized Gains (Losses)	\$	14,771.27
		\$	24,615.49
Total Income			\$ 62,787.13
EXPENSES			
<i>Disbursements</i>			
	Scholarships	\$	(12,500.00)
			\$ (12,500.00)
<i>Administrative Expenses</i>			
	Accounting Expenses	\$	(720.00)
	Workshops	\$	(670.00)
	Postage and Shipping	\$	-
	Website Expenses	\$	(364.10)
			\$ (1,754.10)
<i>Investment Expenses</i>			
	Account Fees	\$	(1,966.11)
		\$	(1,966.11)
Total Expenses			\$ (16,220.21)
NET INCOME			\$ 46,566.92

Get Involved

The Foundation awards monetary scholarships to graduating high school seniors for the purpose of supporting these deserving students as they begin their journey as college students. Eligibility for the scholarships requires students to demonstrate intellectual promise, good work habits, high character and financial need. We invite you to join us in building better communities - one student at a time.

Volunteer

Share your time, talent and experience with one of our scholarship recipients.

Join the Board

Board members create the vision and strategy for the Foundation. If you are looking for a leadership role, Board membership may be for you.

Become a Partner

If you belong to a business or organization that shares our vision, strategic partnering can help you meet your goals while also helping the Foundation and our scholars.

Donate

Your monetary contribution helps fund scholarships for high school teen entering college. All donations are tax deductible. To donate only, please visit dsfpf.org or mail your donation to 204 East Second Avenue #308, San Mateo, CA 94403 - payable to Delta San Francisco-Peninsula Foundation.

2016 Financial Fortitude Workshop

Building a Roadmap to Financial Success

According to the Council for Community and Economic Research, the total cost of living in San Francisco is 62.6 percent higher than the U.S. average—and housing is nearly three times more expensive than in other U.S. cities. The average rent for a two-bedroom apartment in San Francisco is \$4,650, \$1,000+ more than the number two city (New York) and \$2,000 more than the rest of the biggest cities in the country. In San Mateo, as of June 2016, a two bedroom apartment rents for \$3,380.

In a recent article from *Kiplinger*, it was stated that many demographic groups — including African-Americans, Hispanics, members of the millennial generation, and those without a college education — are at a disadvantage when it comes to making ends meet, planning ahead, managing financial products, and having financial knowledge. Therefore, the Foundation felt a need for information on budgeting, 401Ks, retirement planning, and help for singles trying to navigate the Road to Financial Success.

The 2016 annual financial fortitude workshop had an expert panel led by the Superior Court Presiding Judge Teri L. Jackson of San Francisco County. The panel consisted of Kent Mannina, Wells Fargo Bank; Farralon Udom, Tora Trading; Helen Kennedy, Financial Planner. They addressed topics such Being Single and Making it Work, Budgeting, Investing in 401Ks, and Retirement Planning. Participants had the opportunity to ask questions at the end of the panel discussion. High school students worked on creating a stellar college application packet, learned about opportunities for scholarships, learned about FAFSA and where to go for help. The youth session was led by Yancie M. Davis, an admissions counselor at Stanford University.

The audience consisted mostly of African Americans and Latinos. The workshop was well received, and the audience asked for more sessions on finances. It was held at the downtown San Mateo Public Library from 9:30 a.m. – 1 p.m.

Stanford Credit Union provided a lovely continental breakfast for all attendees.

2016 Financial Fortitude Workshop

Building a Roadmap to Financial Success



Clockwise from top: Hon. Teri Jackson (middle) and Yancie Davis with youth attendees.

Quita Highsmith, Elizabeth Bond, Esq., Yvette Irvin; Lorraine Dabney, Hon. Teri Jackson; Bettye Price, Loretta Cohen; Imo Udom, Yancie M. Davis; Bessie Stewart-Ross, Elizabeth Bond, Esq.



Our 2016 Scholarship Recipients

Investing in the future



Deija Smith
Evelyn Neely Scholar
 Freshman, DePaul University



Tamirah Gallaread
 Sophomore, Cal State Monterey

Your Support Makes a Difference!

We believe in the power of giving to help young students like these achieve their educational and career goals. When you donate to the Delta San Francisco-Peninsula Foundation, you help improve the quality of life in the Bay Area by supporting programs like the Financial Fortitude Workshop that fosters educational growth.

The Delta San Francisco-Peninsula Foundation proudly supports diverse college students by providing students with scholarships over their four years in school.

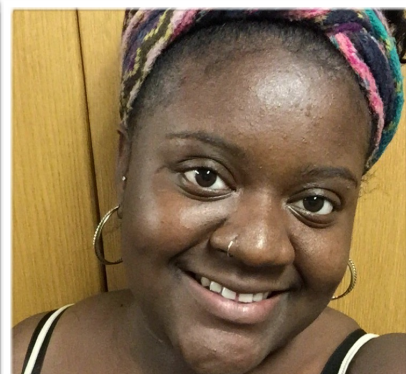
Our Board covers the cost of our operating expenses, so 100% of your donation goes to our scholarship fund.

Donate online at dsfpf.org
 or by mail:
 204 East Second Avenue #308
 San Mateo, CA 94401

Thank you for your generosity!



Adesia Cotton
Kathryn Campbell Scholar
 Sophomore, SF State University



Cierra Sherman
 Junior, UC Santa Cruz



Victoria Mills
 Junior, UC Riverside

