

DELTA

San Francisco - Peninsula

FOUNDATION

2018 Annual Report

TABLE OF CONTENTS

Message from the Chair	1
Our 2018 Board of Directors	2
Our 2018 Scholarship Recipients	3
Financial Literacy Workshop	4
Inaugural Supporters & Friends Reception	5
Financial Report	6
Our Generous Supporters	9

OUR MISSION

To improve the quality of life in the San Francisco and Peninsula area by supporting programs that foster educational growth. The Foundation will provide financial assistance in the form of scholarships and awards to individuals and organizations.

MESSAGE FROM THE CHAIR

Dear Supporters,

We are proud to present our 2018 Annual Report. The Foundation pursues its mission of improving education and scholarship by providing (1) financial assistance in the form of four-year scholarships to underserved college students and (2) financial literacy workshops to the San Francisco-Peninsula Bay Area Community. We held our first donor appreciation event in August and hosted over fifty people.



Bessie Stewart-Ross
Chair, Delta SF-Peninsula Foundation

We are very proud of our current five wonderful scholars who are thriving in their respective universities: University of Oregon, Bennett College, DePaul University, San Francisco State University, and Cal State University Monterey. Because of your support, the Foundation provided \$26,500 to our scholars in 2018.

Growing and Sustaining Wealth was the theme for the Eighth Annual Financial Literacy Workshop. Each year, we generate more enthusiasm from participants wanting to improve their finances.

Just as communities evolve, the Foundation had an unexpected loss and one addition. Board member Mildred Swann passed away on October 14, 2018 and Stacy Hovan, Esquire joined our Board on November 17, 2018. Mildred had been a vibrant member of the Board since 2008. In memory of Mildred, we received \$4,755.00 from family and friends. We shall always be appreciative of her contributions and leadership to the Board and we look forward to Stacy's expertise and contributions as well.

The 2018 year was very successful and we are grateful for your support. We appreciate your generosity, your presence at our events, and all you have done. Without you, these successes would not have been possible.

Sincerely,

A handwritten signature in black ink that reads "Bessie L. Stewart-Ross". The signature is fluid and cursive, with the last name "Ross" being particularly prominent.

Bessie L. Stewart-Ross
Chairperson

OUR 2018 BOARD OF DIRECTORS

Executive Board

Bessie L. Stewart-Ross, Chair
Bettye Price, Vice Chair
Quita Highsmith, Secretary
Farralon Udom, Treasurer

Members

Abayomi Jones, MD
Barbara Brown
Helen Kennedy-Lazar
Imo Udom
Lillian Yvette Irvin
Mildred Swann
Honorable Teri L. Jackson
Stacy Hovan, Esq.

GET INVOLVED

The Foundation awards monetary scholarships to graduating high school seniors for the purpose of supporting these deserving students as they begin their journey as college students. Eligibility for the scholarships requires students to demonstrate intellectual promise, good work habits, high character and financial need. We invite you to join us in building better communities - one student at a time.

VOLUNTEER Share your time, talent and experience with one of our scholarship recipients.

JOIN THE BOARD Board members create the vision and strategy for the Foundation. If you are looking for a leadership role, Board membership may be for you.

BECOME A PARTNER If you belong to a business or organization that shares our vision, strategic partnering can help you meet your goals while also helping the Foundation and our scholars.

DONATE Your monetary contribution helps fund scholarships for high school students entering college. The Delta San Francisco - Peninsula Foundation is a 501(c) 3 organization. All donations are tax deductible. To donate, please visit dsfpf.org or mail your donation to Delta San Francisco-Peninsula Foundation, 204 East Second Avenue #308, San Mateo, CA 94403.



OUR 2018 SCHOLARSHIP RECIPIENTS



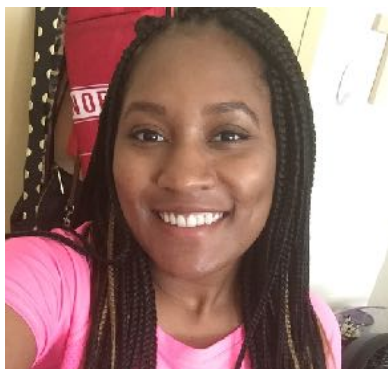
Kai Toney
Bessie Stewart-Ross Scholar
Freshman, University of Oregon



Tamara Grady
Sophomore, Bennett College



Deija Smith
Evelyn Neely Scholar
Junior, DePaul University



Tamirah Gallaread
Senior, Cal State Monterey



Adesia Cotton
Kathryn Campbell Scholar
Senior, SF State University



FINANCIAL LITERACY WORKSHOP

The Foundation's financial literacy workshop began in 2010 and is held annually. Our goal is to provide practical personal finance advice to inspire our community to practice sound financial habits. In addition, we want to move beyond community education to changing behavior.

"Growing and Sustaining Wealth" was the theme for our 2018 workshop. It was not only about growing wealth, but how individuals can sustain the wealth that they gain. Workshop ratings were very high. Many participants wanted to attend all the sessions. Others suggested that we target younger people. One participant said, "this workshop would have changed my life had I had it earlier." We welcomed many informative, practical discussions on how to grow and maintain wealth in our community.

A panel discussion was led by Board member Farralon Udom. The panel was followed by small groups lead by the following:

- Angel Investing by JeShaune Jackson
- At Your Fingertips: Financial is Key, Esq. The Law Offices of Verleana D. Green and Kent Mannina, National Sales Manager, Wells Fargo
- Apps That Make Managing Your Money Easy by Farralon Udom, CFA
- Crowdfunding Real Estate, Jason Ho, Founder and CEO Clockspot.com
- Fixing It! Overcoming Money Mistakes and Mismanagement, by Lynell Green, Chief Inspirational Officer, The Lynell Group

INAUGURAL SUPPORTERS & FRIENDS RECEPTION

In August, approximately fifty persons joined us for our Inaugural Supporters and Friends' Reception in Brisbane. We were honored to show gratitude to our dedicated donors. We had representation from corporate sponsors as well as individual donors. Three of our scholarship recipients spoke of their gratitude and appreciation for the support given to them by the Foundation. It was an amazing afternoon.



Scholars Kai Toney, Tamara Grady, and Adesia Cotton



Abayomi Jones, MD, Janice Willis, Kim Davis, and Quita Highsmith



Gail Friedman, Martin Harband, and Patricia McCambridge



Lillian Irvin and Evelyn Neely



Bessie Stewart-Ross, Bettye Price, Bridget Morgan, and Susan Schofield



Farralon Udom, Stacy Hovan, Osi Esue, Imo Udom, and Kim Davis

*"During my studies at San Francisco State University, I worked, lived at home in San Mateo, commuted to SF State, and received funds from the Foundation for four years. Those funds will enable me to graduate in 2019 with **NO DEBT**. For those funds from the Delta San Francisco-Peninsula Foundation, I am truly grateful."*

- Adesia Cotton, The Kathryn L. Campbell Awardee

FINANCIAL REPORT | Balance Sheet

Year Ending December 31, 2018

ASSETS

Checking Accounts

Bank of America (1045)	\$	0.45
Bank of America (5664)	\$	44,404.56
Chase (7601)	\$	0.01

Money Market Accounts

Union Bank (1088)	\$	7,171.47
Union Bank (5251)	\$	6,199.30

Other Accounts

PayPal	\$	4,595.10
--------	----	----------

Total Cash and Cash Equivalents

\$ 62,370.89

Investments

Corporate Bonds	\$	78,127.28
Mutual Funds	\$	234,659.13
Exchange Traded Funds	\$	76,385.78

Total Investments

\$389,172.19

TOTAL ASSETS

\$451,543.08

LIABILITIES

Uncashed Checks	\$	(195.00)
-----------------	----	----------

TOTAL LIABILITIES

\$ (195.00)

NET WORTH

Balance as of January 1, 2018	\$	453,046.72
Current Year Earning	\$	(898.64)
Balance as of December 31, 2018		\$452,148.08

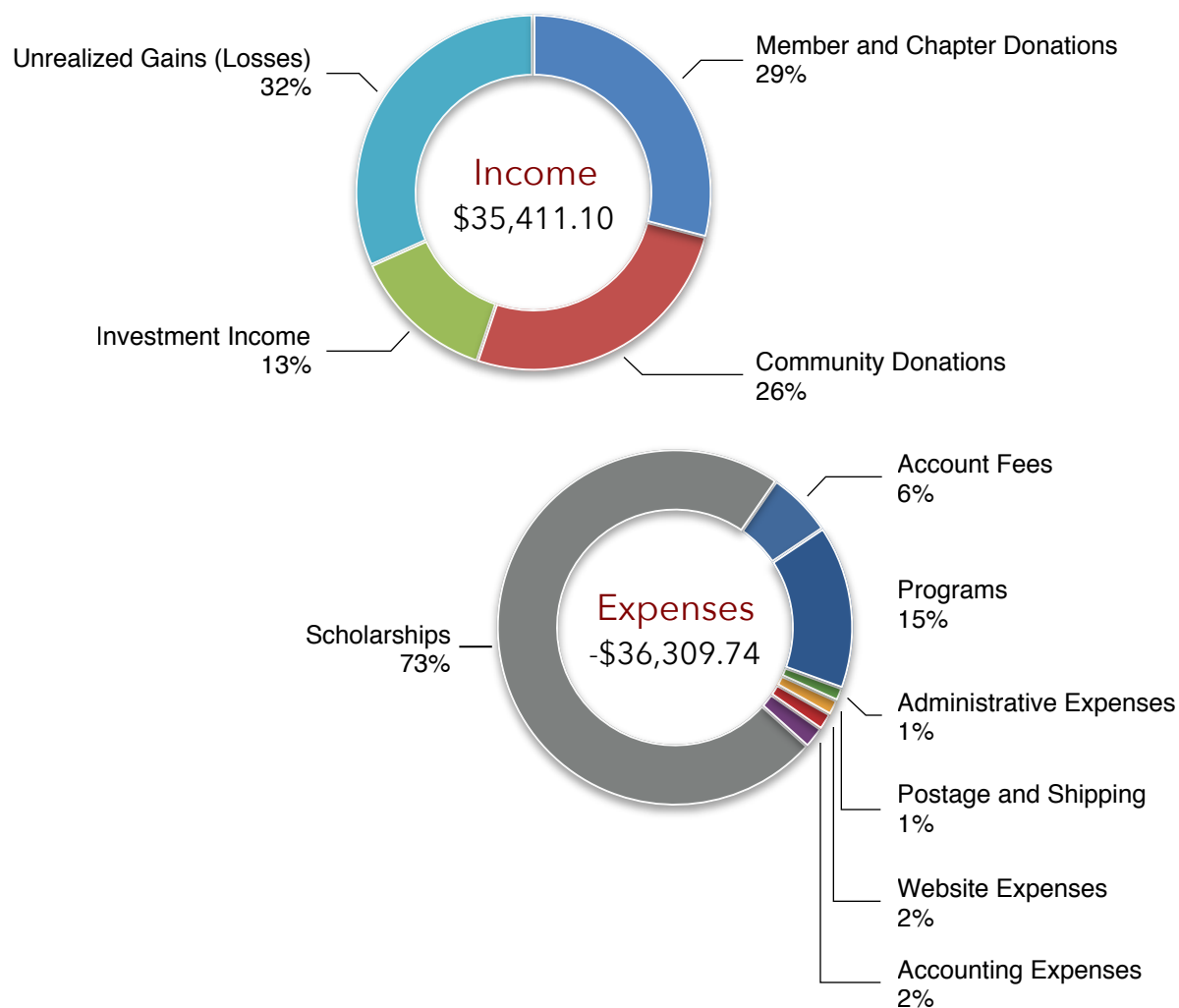
TOTAL LIABILITIES AND NET WORTH

\$452,148.08

FINANCIAL REPORT | Income & Expenses

Year Ending December 31, 2018

Delta San Francisco-Peninsula Foundation has been able to grow its base of assets by practicing good stewardship. However, an increase of \$10,000 in donations would afford an increase in scholarships by an average of \$500 and an expanded literacy workshop while bracing for an anticipated downturn in the market.



FINANCIAL REPORT | Income Statement

Year Ending December 31, 2018

INCOME

Donations

Member and Chapter Donations	\$ 27,987.39	
Community Donations	\$ 25,167.72	
		\$ 53,155.11

Investment Income

Investment Income	\$ 12,680.61	
Realized Gains (Losses)	\$ 10.86	
Unrealized Gains (Losses)	\$ (30,505.48)	

Other Income

Other Income	\$ 70.00	
		\$ (17,744.01)

Total Income

\$ 35,411.10

EXPENSES

Disbursements

Scholarships	\$ (26,500.00)	
		\$ (26,500.00)

Administrative Expenses

Accounting Expenses	\$ (713.20)	
Administrative Expenses	\$ (438.11)	
Programs	\$ (5,426.00)	
Postage and Shipping	\$ (504.00)	
Website Expenses	\$ (559.10)	
		\$ (7,640.41)

Investment Expenses

Account Fees	\$ (2,169.33)	
		\$ (2,169.33)

Total Expenses

\$(36,309.74)

NET INCOME

\$ (898.64)

OUR GENEROUS SUPPORTERS

Your Support Makes a Difference!

We believe in the power of giving to help young students achieve their educational and career goals. The Delta San Francisco-Peninsula Foundation proudly supports diverse college students by providing students with scholarships over their four years in school.

When you donate to the Delta San Francisco-Peninsula Foundation, you help improve the quality of life in the Bay Area by supporting programs like the Financial Literacy Workshop that fosters educational growth.

The organization covers the cost of operating expenses, scholarship funding, and financial literacy workshops.

Donate online at dsfpf.org
or by mail to
Delta San Francisco-Peninsula Foundation
204 East Second Avenue #308
San Mateo, CA 94401

Thank you for your generosity!

CORPORATE SPONSORS

GOLD (\$5,000 and above)
Wells Fargo Foundation

SILVER (\$2,500 – 4,999)
Benevity Community Impact Fund

BRONZE (\$1,000 – 2,499)
Union Bank
Stanford Credit Union

OUR GENEROUS SUPPORTERS

INDIVIDUAL SPONSORS

GOLD (\$5,000 and above)

Evelyn Neely

SILVER (\$2,500 - \$4,999)

Bessie L. Stewart-Ross
Imo and Farralon Udom

Janice Willis
Patricia Chandler Seawell

Ronald Knox
Quita Highsmith

BRONZE (\$1,000 - \$2,499)

Abayomi Jones, MD
Amy Sabastian
Barbara A. Brown
Bettye Price

Helen Kennedy-Lazar
Judge Teri L. Jackson
Joseph Bojalad
Martin Harband, Esquire

Regina Wallace Jones
Stacy Hovan, Esquire

PATRONS (\$25 - \$999)

Allean Ritcher, PHD
Amazon Smile
Amy Ginsburg
Barrett Anderson
Bernita Malloy
Brenda Sell
Brian Swann, DDS
Carolyn Pendergast
Cassandra Hambrick
Cassi Pittman
Cole Cannon
Collette Norman
David Motley
Deborah Martin
Debra Watkins
Denise Abdun-Nur
Dominique Hollins

Donna Heinel
Freda Cobb
Gloria Brown
James Hutchinson, MD
John Sheppard Maher
June Armstead
Kemi Oyewole
Lawrence and Margaret Teshara
Leona Bridges
Leslie Friedman
Lillian Yvette Irvin
Linda Rarden
Loretta Cohen
Lucretia-del Broussard
Mae Threadgill
Mary M. Bona
Michael Moore

Mikel Sherry Carr
Monica Morita
Network for Good
Patricia Jean Louis-Knight
Phyllis Ishida, DDS
Phyllis Moore
RBC Foundation
Robert McClean
Russell Romeo
Ruth Payton
Samantha Moore
Susan Schofield
Tina Crawford
Tyler and Faith Scriven
Tyra Beavers



Delta San Francisco-Peninsula Foundation

204 East Second Avenue #308

San Mateo, CA 94401

dsfpf.org

The Delta San Francisco-Peninsula Foundation is a 501 (C) 3 non-profit organization.

Tax I.D. 31-1656911

Special thanks to A.Nicole by Design for formatting.

Dated July 31, 2019